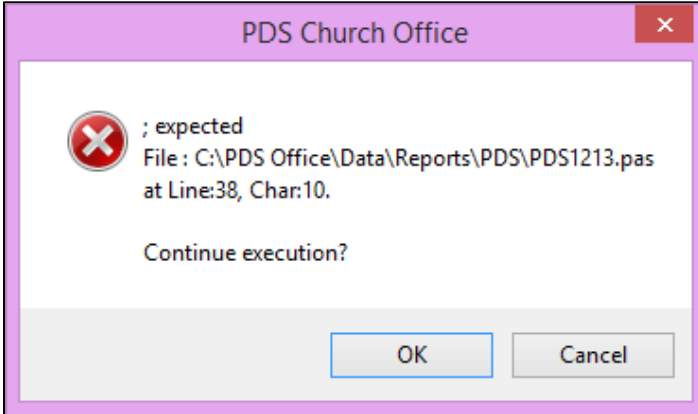


Detecting Errors

In the Advanced Script dialog box, on the Pascal Script File tab, there is a **Check Code** button. This checks for simple syntax errors, but it can't detect complex errors. When you run the report, if there's an error, a dialog box displays with as much information as possible.



This tells you what to fix in the code. In the example above, the program tells you it expected to read a semicolon (;) on line 38, character 10.

Common Problems

The following are a few things you need to be aware of in scripting:

- **The program can crash more when you write scripts.** There are less protections, so the report is more likely to do something that freezes the program. PDS recommends using newer operating systems. For more information, see [System Requirements](#).
- **It's easy to make a mistake when you enter an event name.** The program doesn't tell you when an event name is misspelled or incorrect. If you have this problem, put a **ShowMessage** command in the procedure when you first add the event to make sure everything you think is running is actually running.
- **If you don't initialize your variables, you will have problems when writing scripts.**